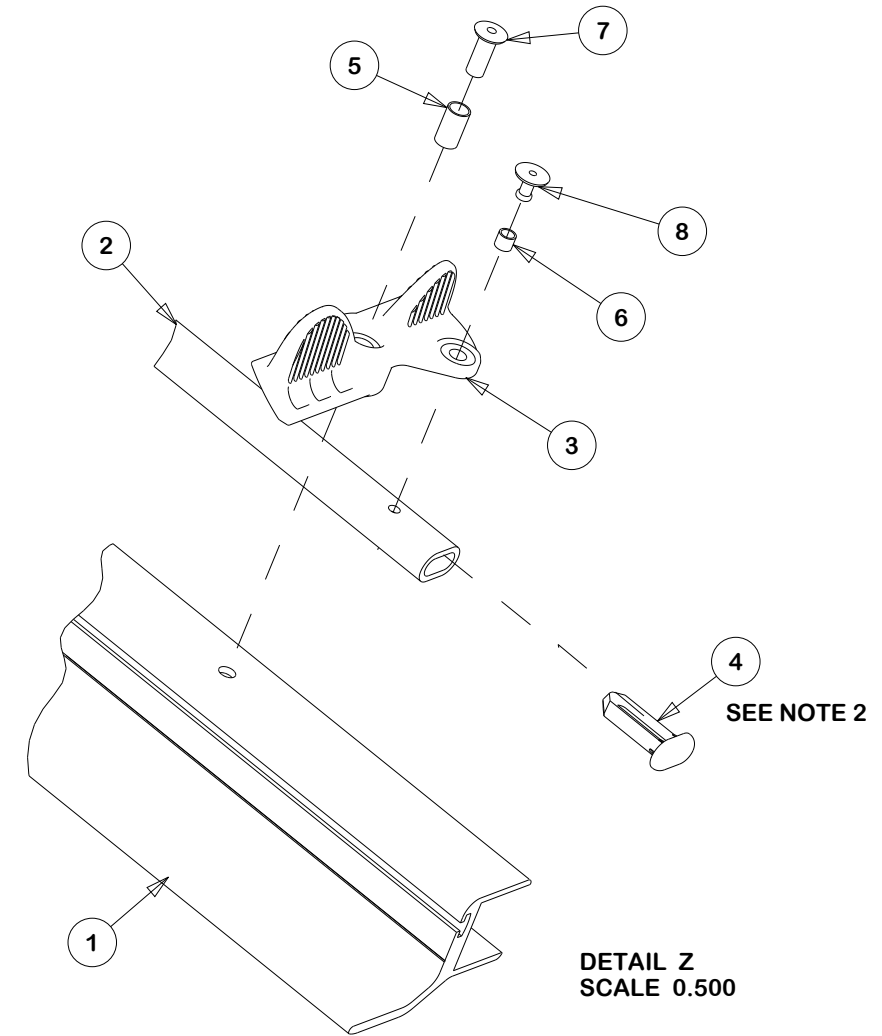


REV	DESCRIPTION	DWN BY	APVD	DATE
A	REPLACED 1/2" HOLE DIM IN OVERLAP WITH GENERAL NOTE	MJT		6/18/08
B	CHANGED #10 HOLES IN OVERLAP TO #12	MJT		9/3/10



INDEX	QTY	PART NUMBER	DESCRIPTION
1	1	---	CENTER OVERLAP
2	1	MADE FROM 40900702	CONNECTING BAR LOX #51693
3	2	40400681	LATCH
4	2	40400682	END PLUG
5	2	40400683	.250 OD SLEEVE
6	2	40400684	.187 OD SLEEVE
7	2	1224810	POP RIVET
8	2	40200356	SSBL44S RIVET

**NOTES:**

- SEE CONNECTING BAR DRAWING FOR OVERALL LENGTH, MACHINING AND FINISHING DETAILS
- ASSEMBLE #40400682 END PLUG TO CONNECTING BAR BEFORE ASSEMBLING OTHER COMPONENTS
- LOX #15381 OVERLAP SHOWN. THE SAME ASSEMBLY PROCEDURES APPLY TO STAINLESS OVERLAP. SEE OVERLAP DRAWING FOR DETAILS
- CROSS CURVE WINDSHIELDS REQUIRE CONNECTING BAR TO BE BENT TO MATCH CURVE OF OVERLAP

PROJECTION  
THIRD ANGLE

93 South Blvd.  
Gloversville, NY 12078  
Phone: (518) 773-0636  
Fax: (518) 773-9414  
www.taylormarine.com

DWG SIZE: TOLERANCES (UNLESS OTHERWISE NOTED)  
LINEAR: +/- 1/16 INCH  
ANGULAR: +/- 1.0 DEGREE

CUST: TMS  
DRAWN BY: THK  
DESC: LINK LATCH ASSEMBLY  
PN/PROD CODE: TMS-024

MODEL: STANDARD PRINT  
SCALE: 0.200  
APPROVED:  
DATE: 10/9/06  
PAGE 1 OF 1