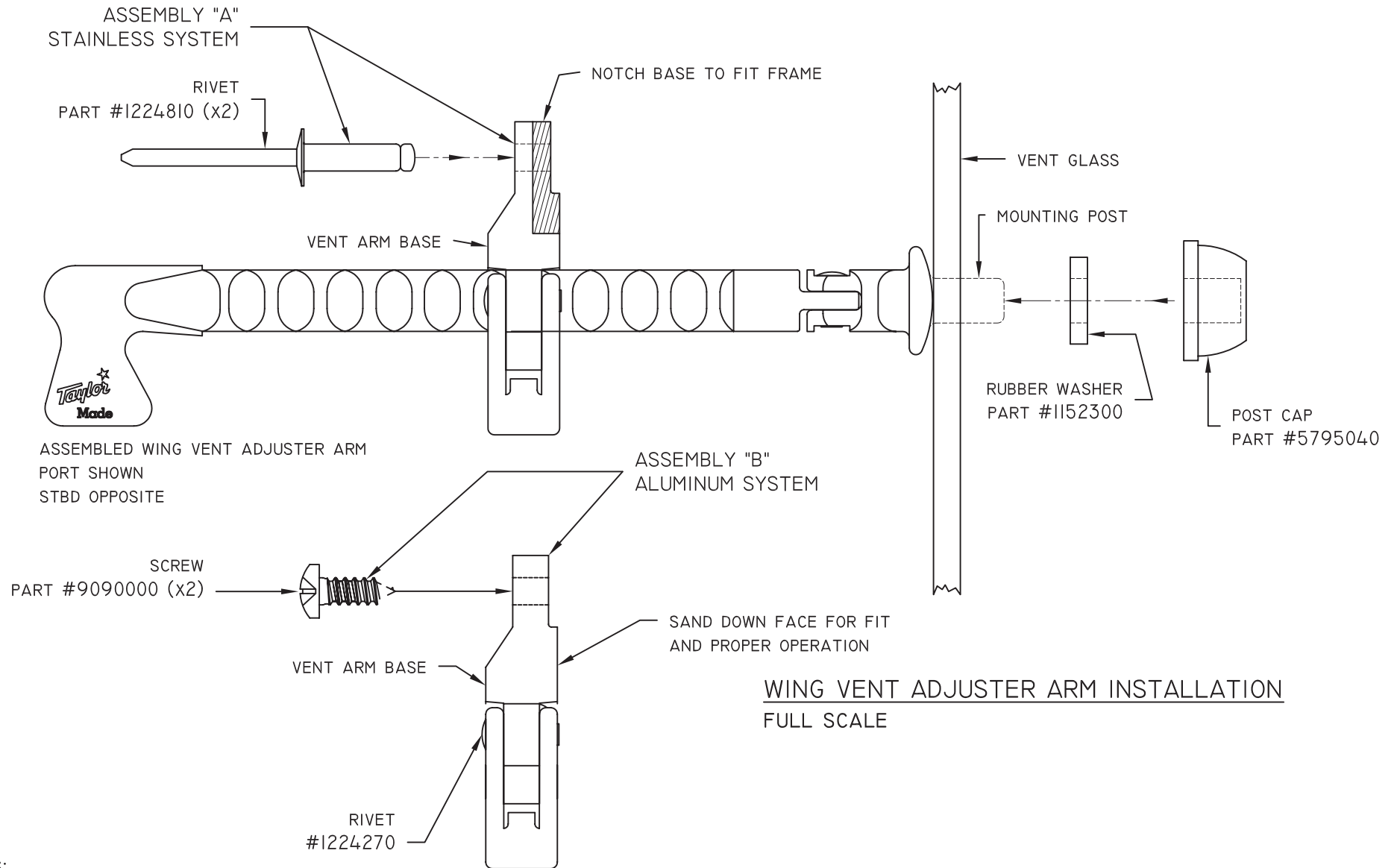


# PRINT TMS-005

REV	DESCRIPTION	DWN BY	APVD	DATE
A	ADDED TYPICAL ALUMINUM SYSTEM ASSEMBLY	THK		8/6/08



## WING VENT ADJUSTER ARM INSTALLATION FULL SCALE

### NOTES:

1. INSERT MOUNTING POST THROUGH GLASS AS SHOWN.
2. SLIDE 1152300 WASHER ON POST AND PUSH 5795040 CAP ON POST UNTIL SNUG.
3. CLOSE VENT, POSITION VENT ARM BASE AGAINST FRAME AND USE HOLES IN THE VENT ARM BASE TO DRILL MOUNTING HOLES IN THE FRAME.
4. ATTACH VENT ARM BASE TO FRAME WITH THE FASTENERS INDICATED FOR THE SYSTEM IN USE



**Taylor Made**  
**SYSTEMS**  
New York, Inc.

PHONE (518) 773-0636  
FAX (518) 725-2420

BOAT:  
TAYLOR MADE SYSTEMS

DESCRIPTION:  
PRINT TMS-005

BY: DJS	DATE: 05/08/03	CODE: TMS-050
------------	-------------------	------------------